

Ross Penhall

ARTIST RECEPTION

FRIDAY, JULY 1, 2011 • 5-7PM

Exhibition continues through July 31

CALDWELLSNYDER

1328 MAIN STREET

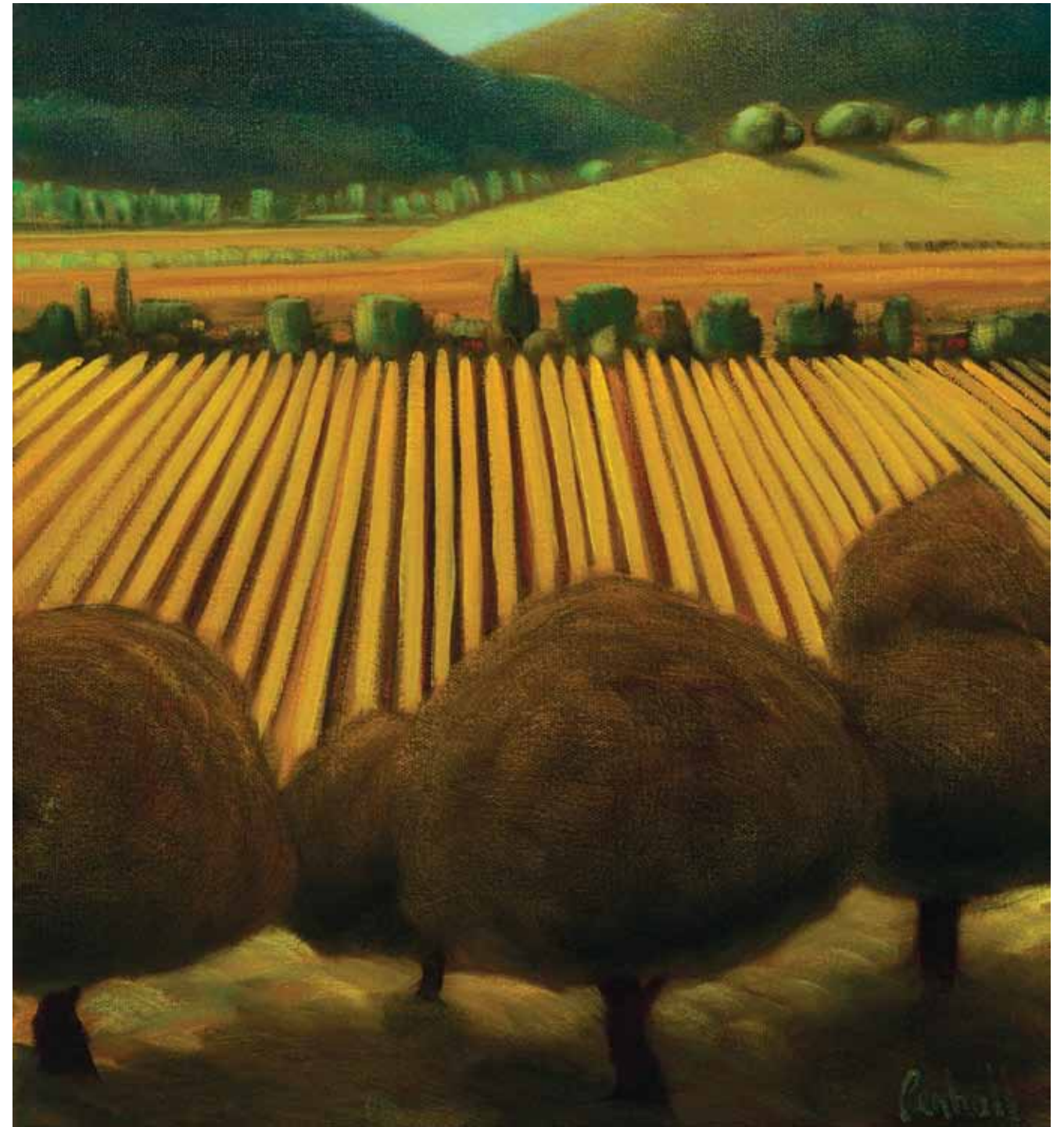
ST. HELENA, CALIFORNIA

CALDWELLSNYDER.COM

707.200.5050



Across the Valley
13 X 12" | OIL ON CANVAS



Ascending Sidewalk
24 X 30" | OIL ON CANVAS



Black Garden
12 X 15" | OIL ON CANVAS



Blue Valley
12 X 15" | OIL ON CANVAS



Boxwood
12 X 14" | OIL ON CANVAS



Canola II

36 X 66" | OIL ON CANVAS



Central Park Evening

30 X 36" | OIL ON CANVAS

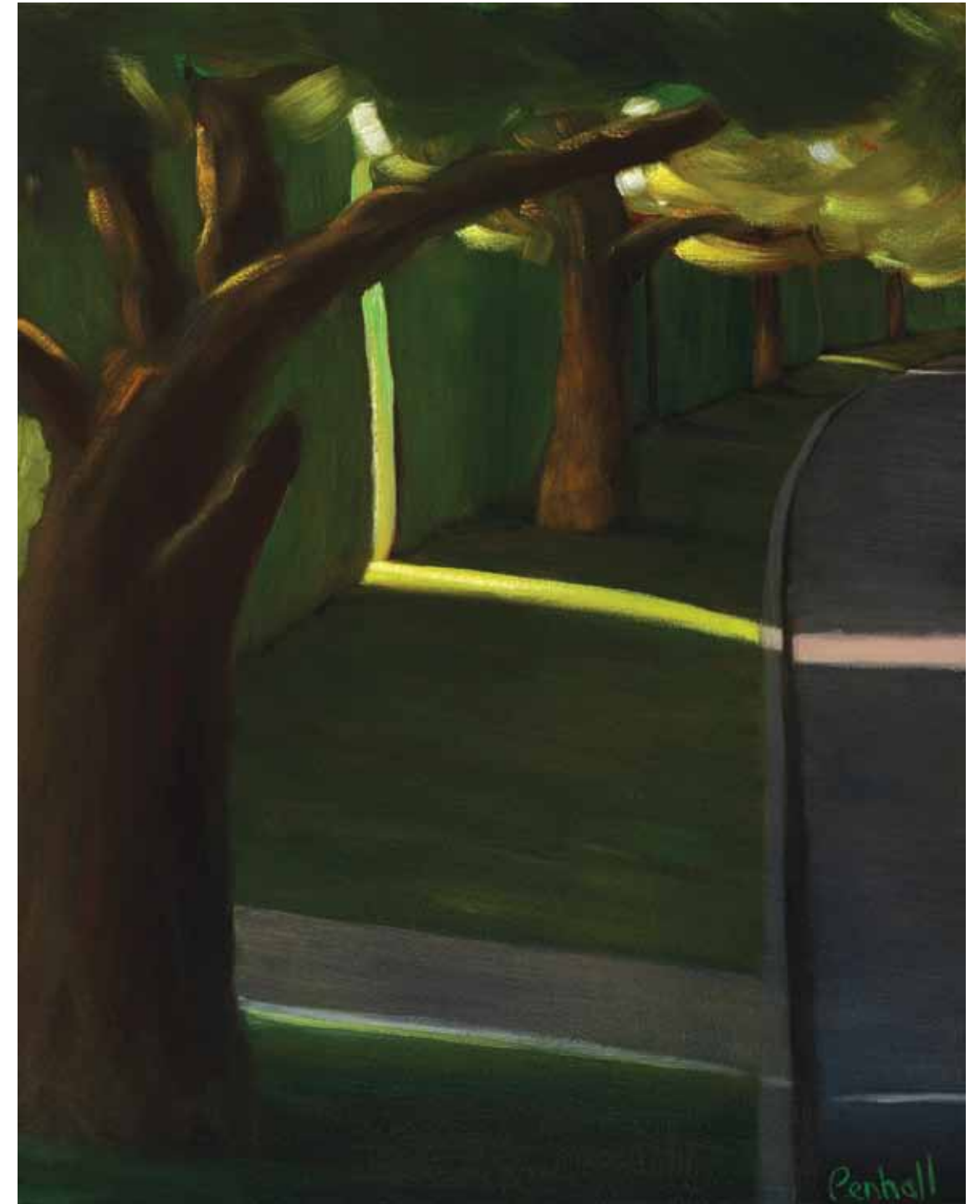


Close Company
12 X 15" | OIL ON CANVAS



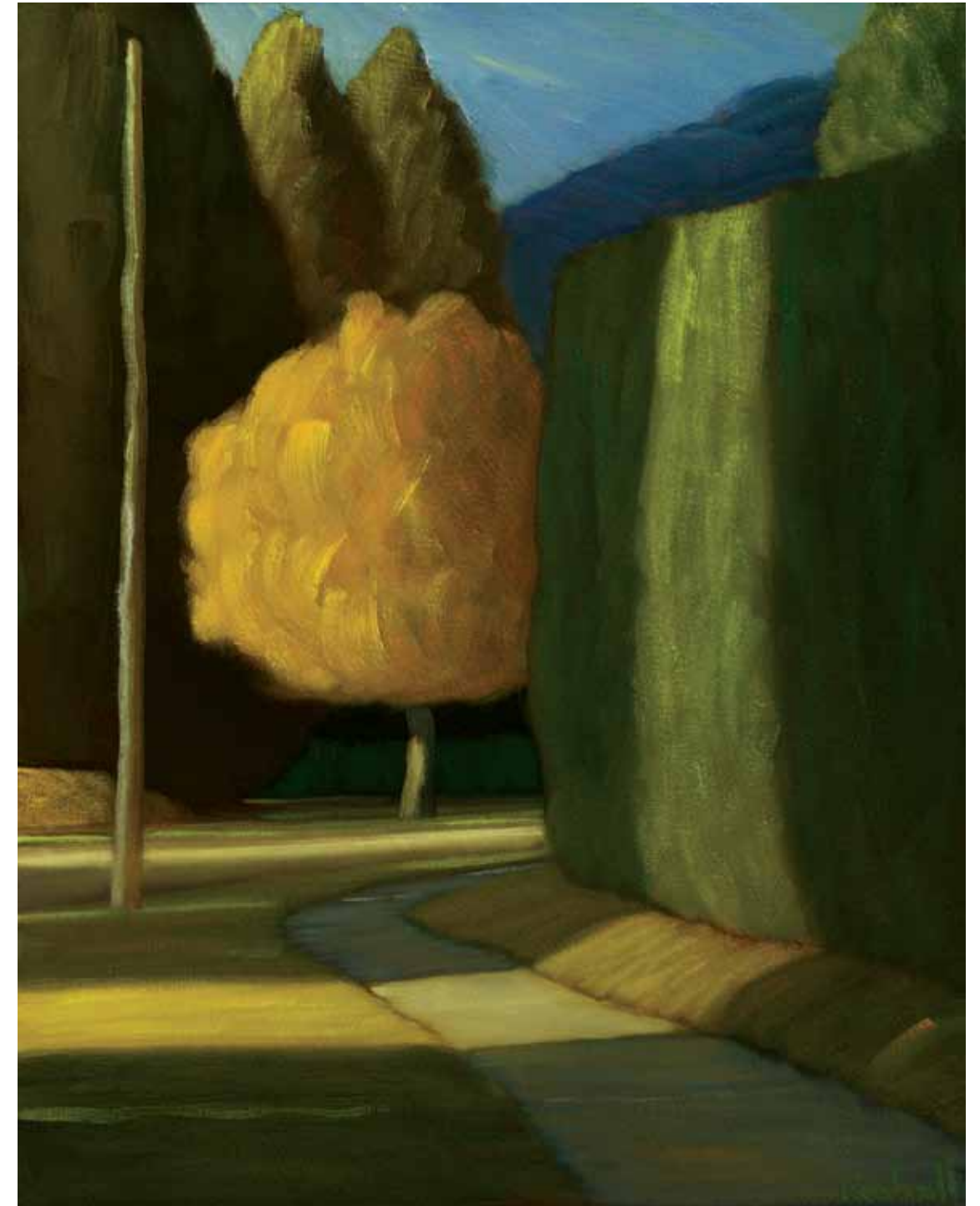
Cracks of Light

15 X 12" | OIL ON CANVAS



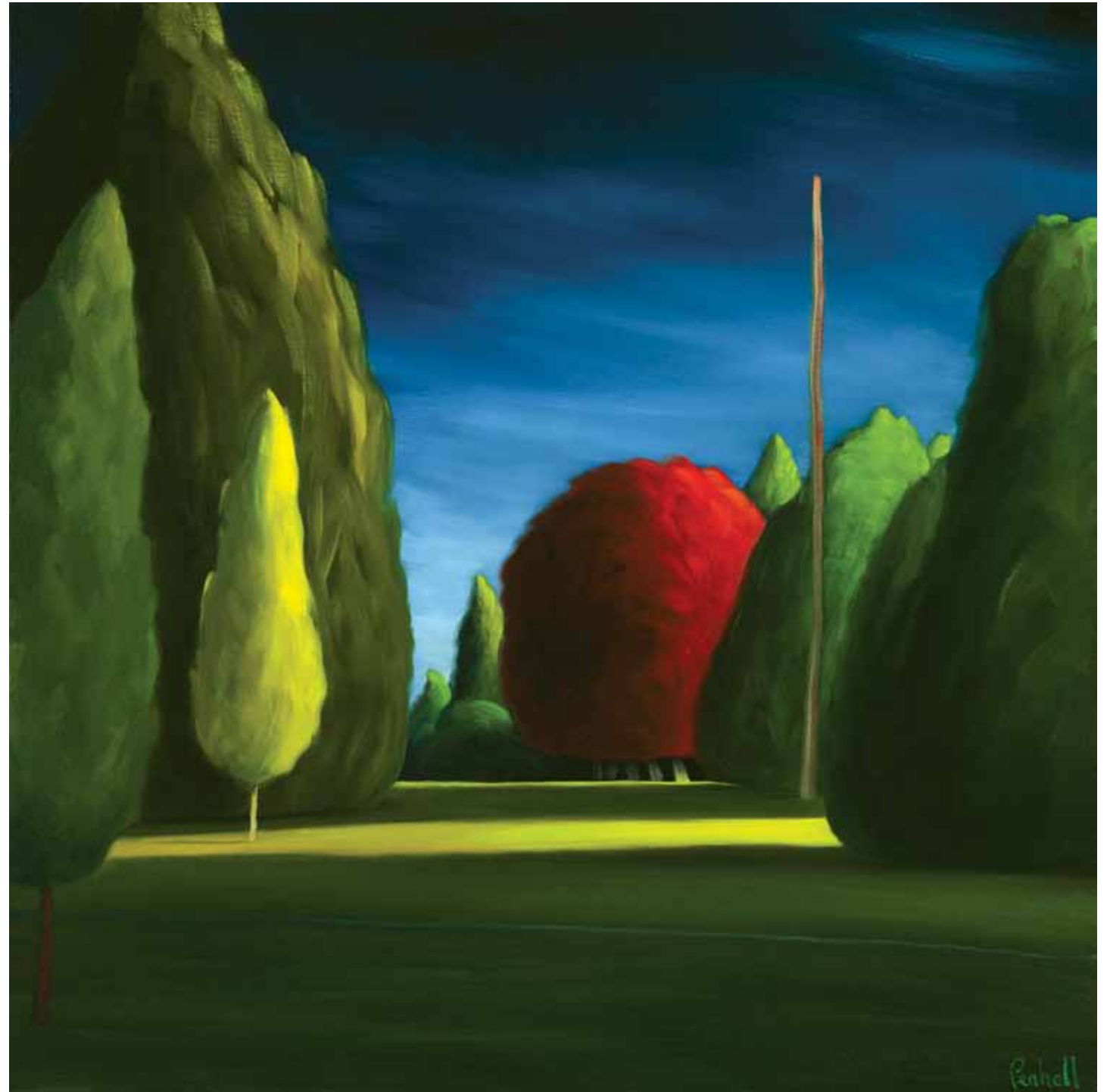
Cropped Hedge

15 X 12" | OIL ON CANVAS



Dark Blue Study

30 X 30" | OIL ON CANVAS



Fall Study
12 X 13" | OIL ON CANVAS



Far Field
12 X 13" | OIL ON CANVAS





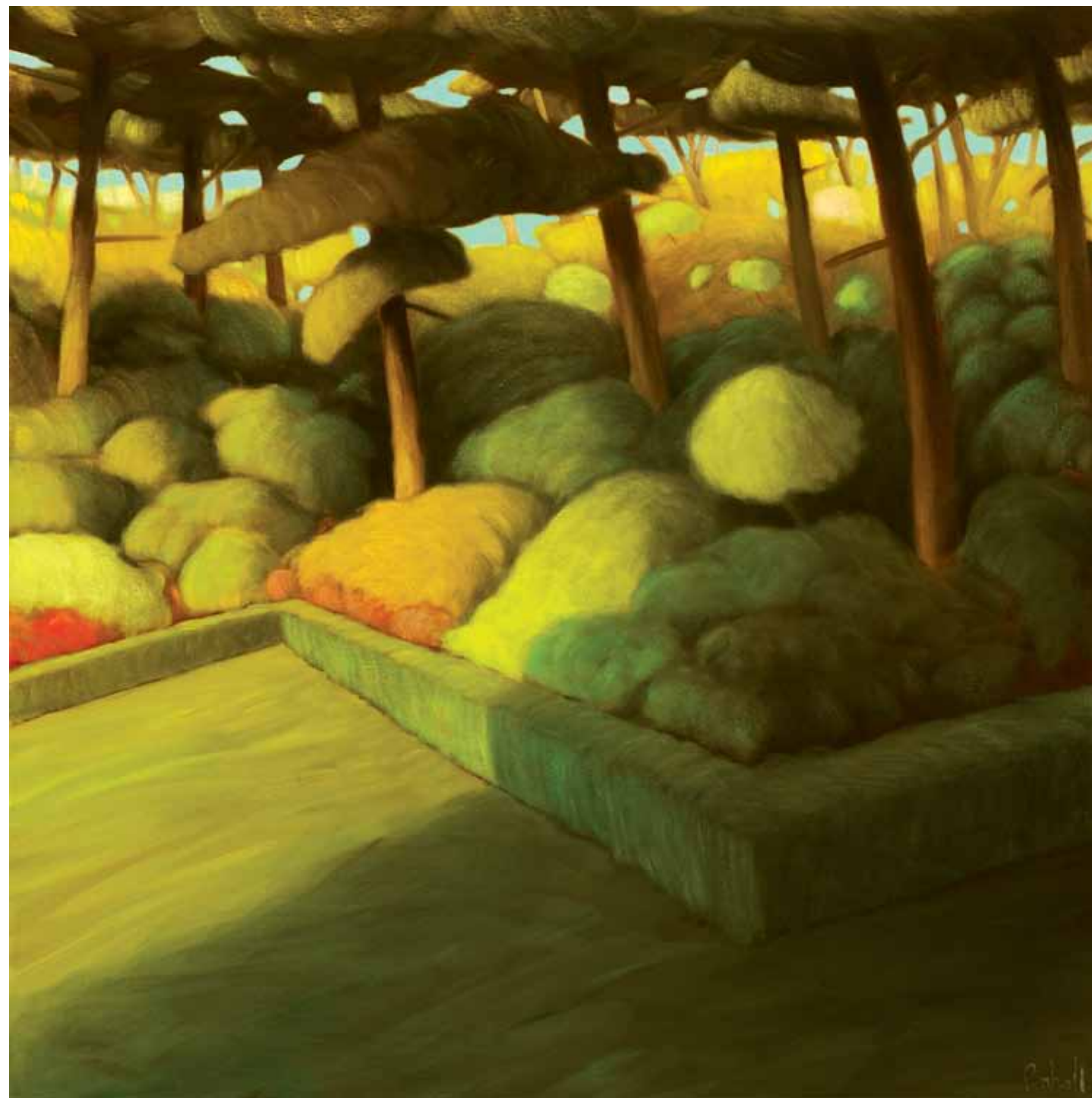
Fertilized Field
30 X 60" | OIL ON CANVAS

Gentle Light
12 X 14" | OIL ON CANVAS



Golden Gate Hedge

30 X 30" | OIL ON CANVAS



Green Study
12 X 15" | OIL ON CANVAS

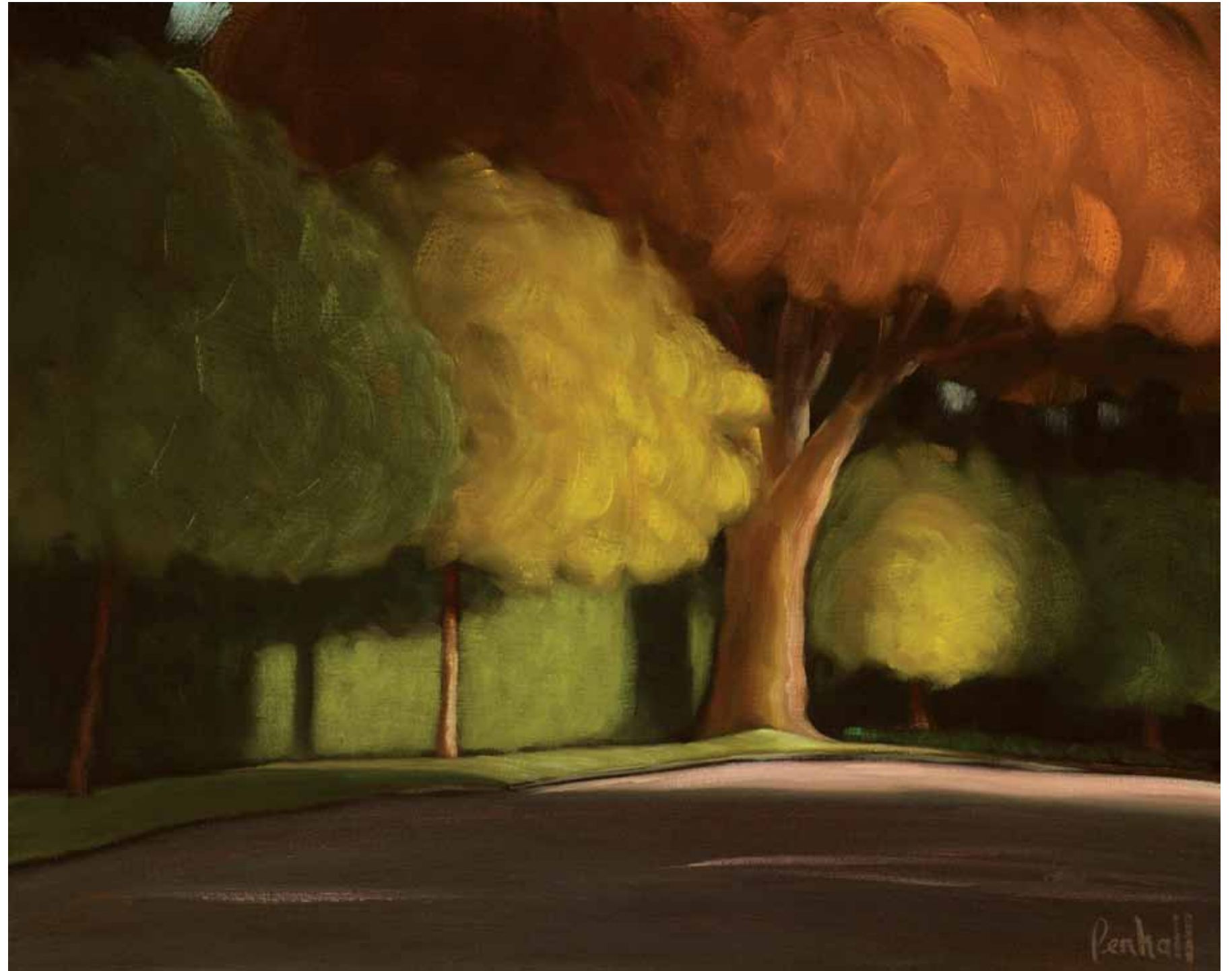




Leaving the Valley
14 X 72" | OIL ON CANVAS

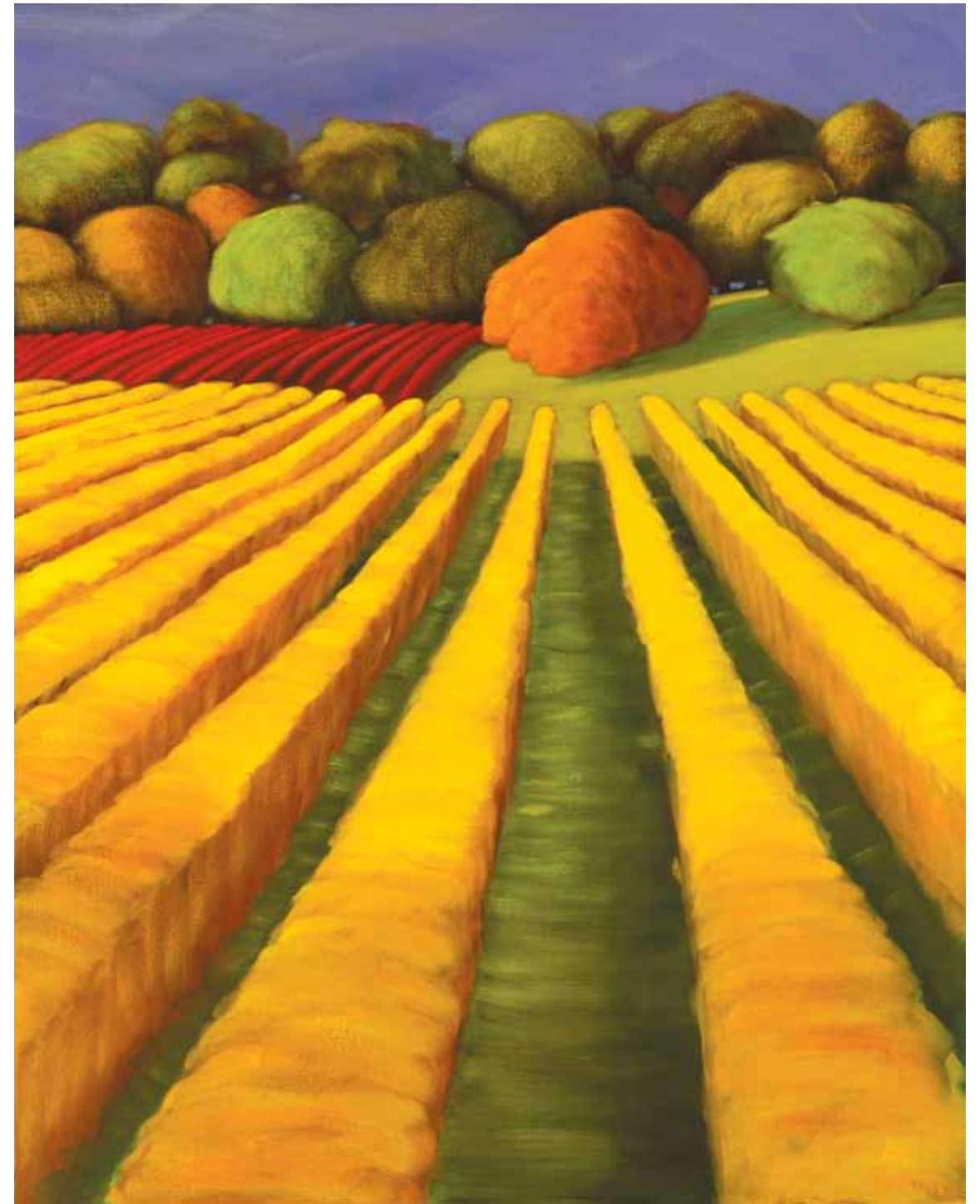
Light Shaft

12 X 15" | OIL ON CANVAS



Napa Valley November

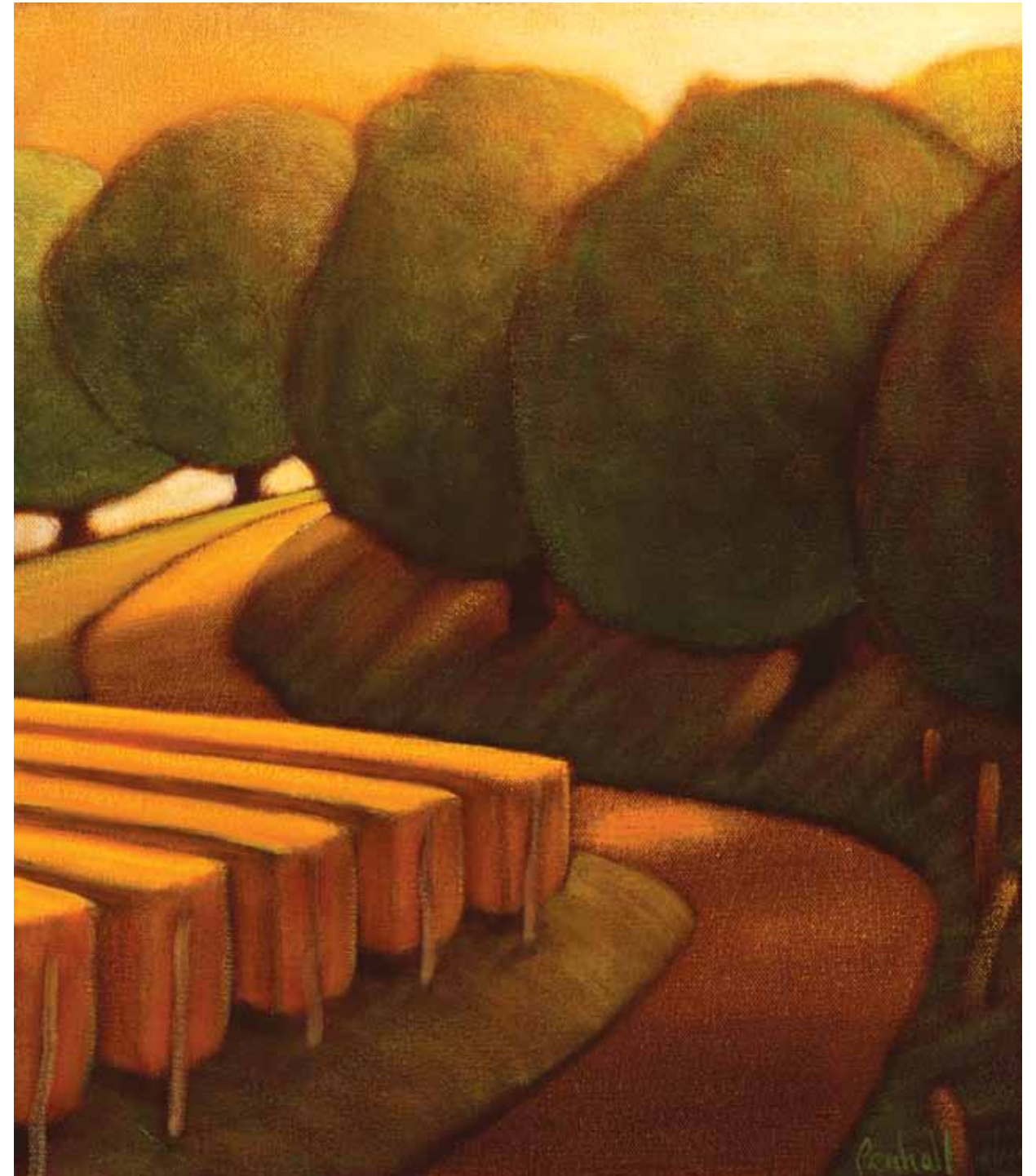
30 X 24" | OIL ON CANVAS



Narrow Hedge
12 X 15" | OIL ON CANVAS

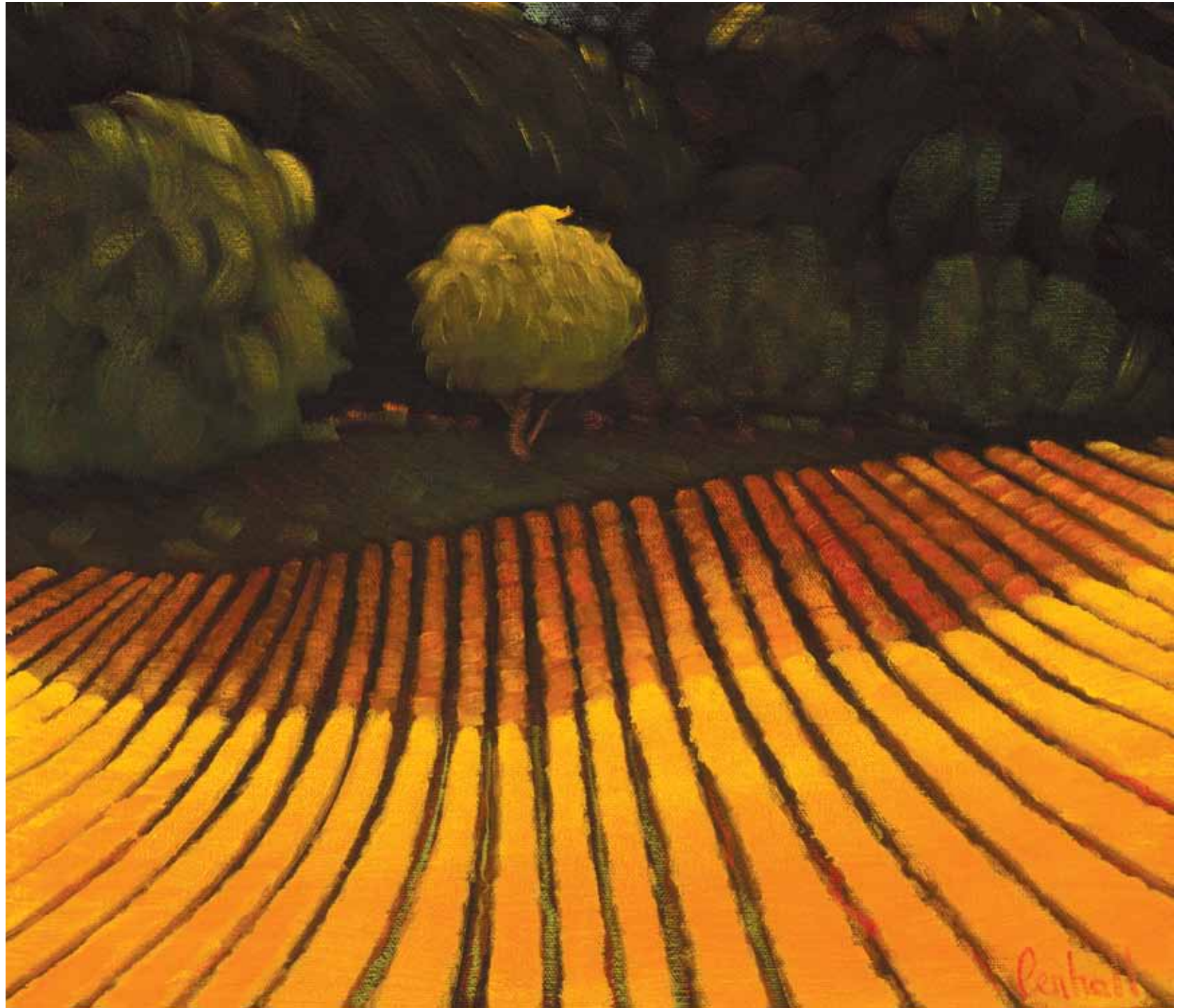


November Napa County
14 X 12" | OIL ON CANVAS



November Vines

12 X 14" | OIL ON CANVAS



Open Field
36 X 40" | OIL ON CANVAS

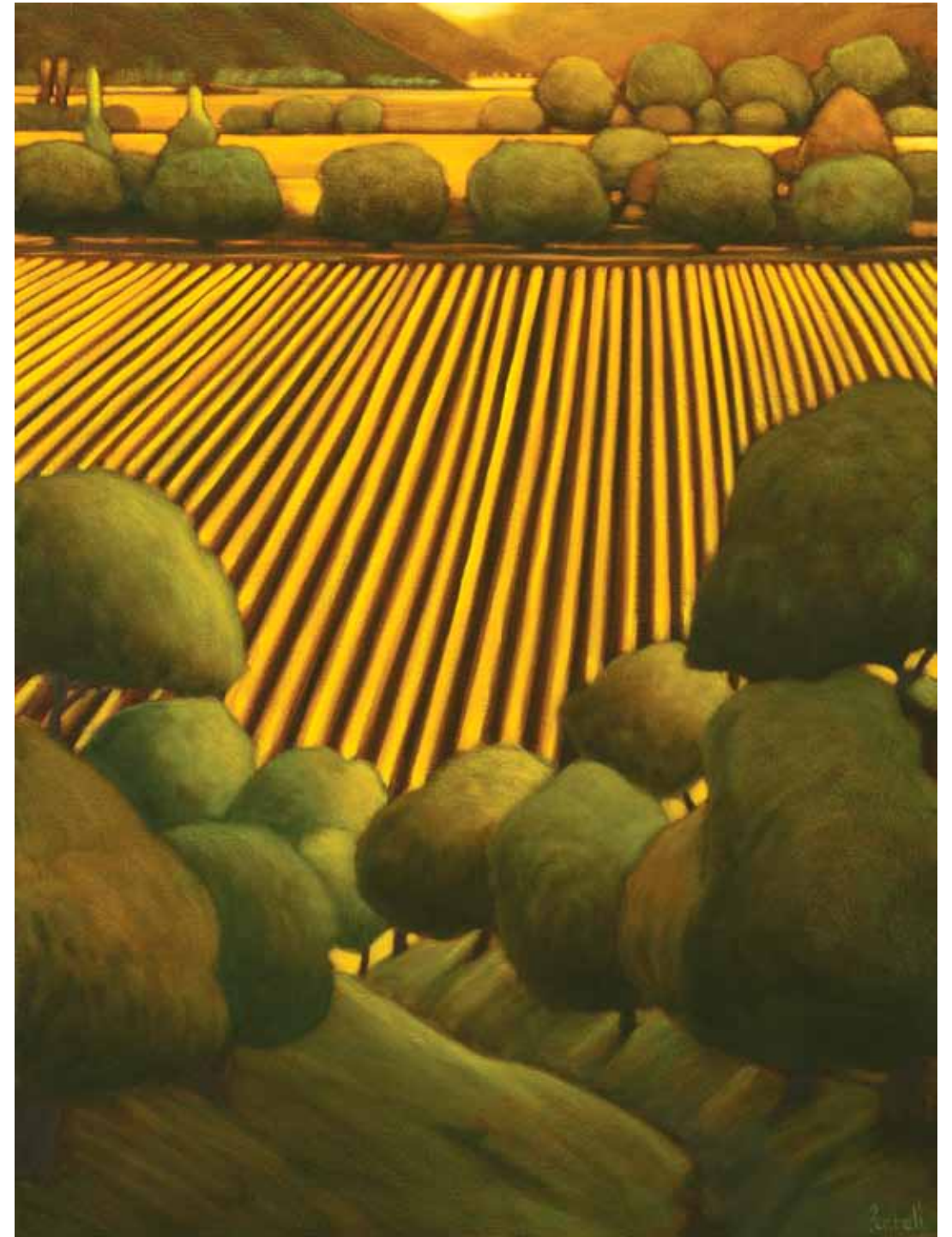


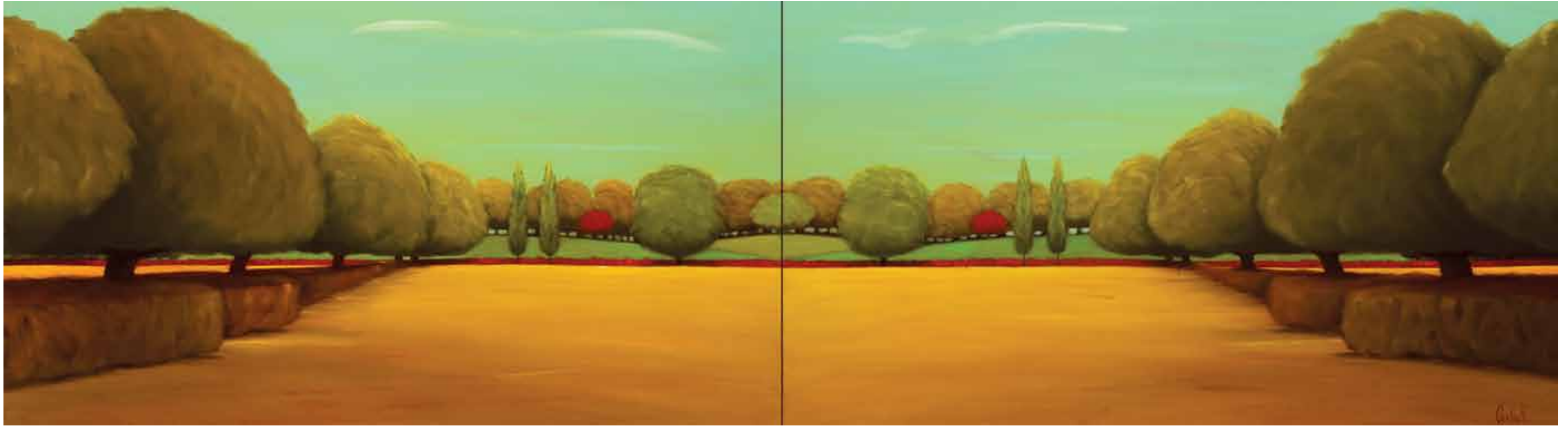
Patchwork I

40 X 40" | OIL ON CANVAS



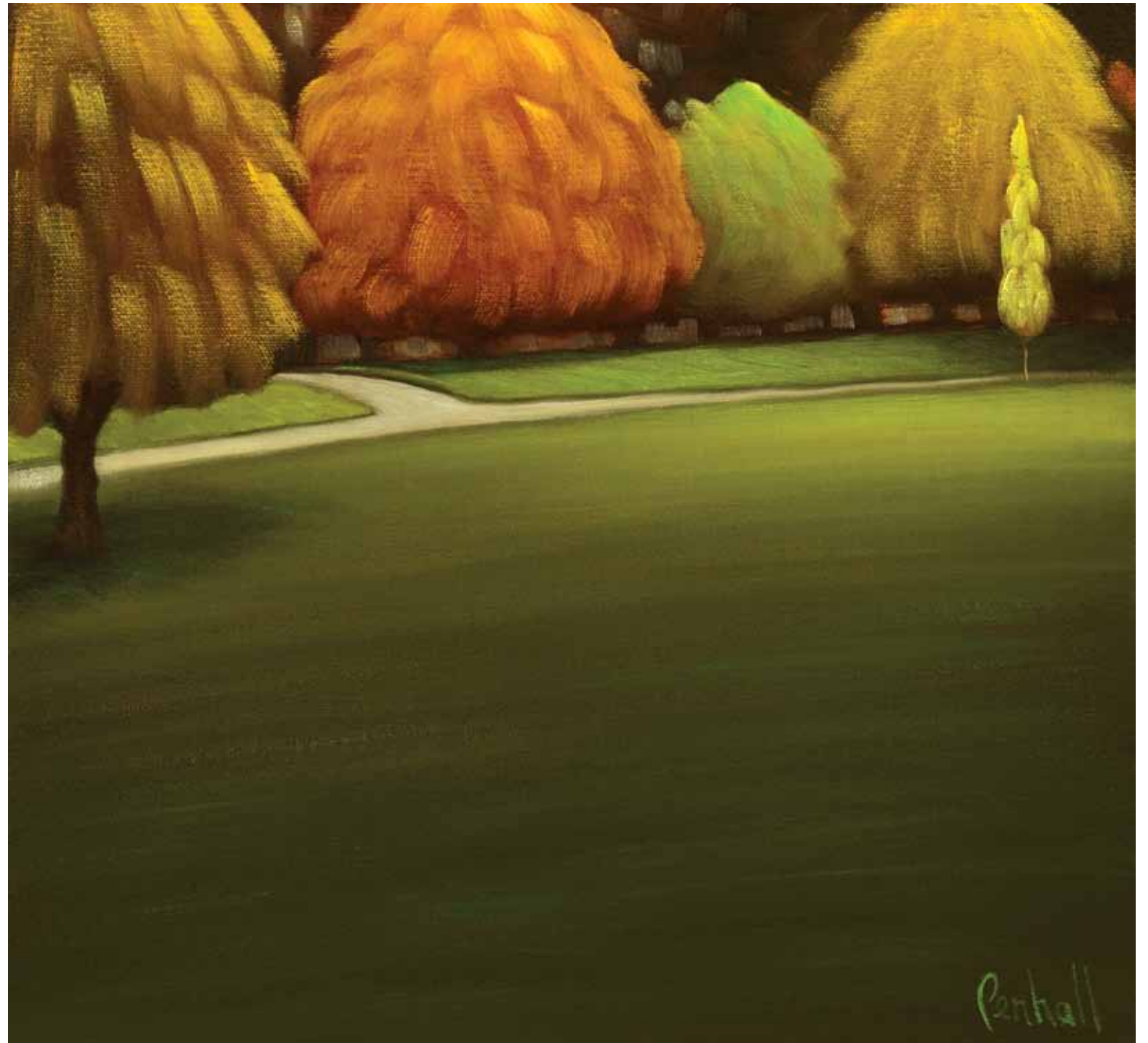
Patchwork II
48 X 36" | OIL ON CANVAS





Reflected Field Diptych
22 X 80" | OIL ON CANVAS

Right Of Way
12 X 13" | OIL ON CANVAS



Scumbled Forest

12 X 14" | OIL ON CANVAS



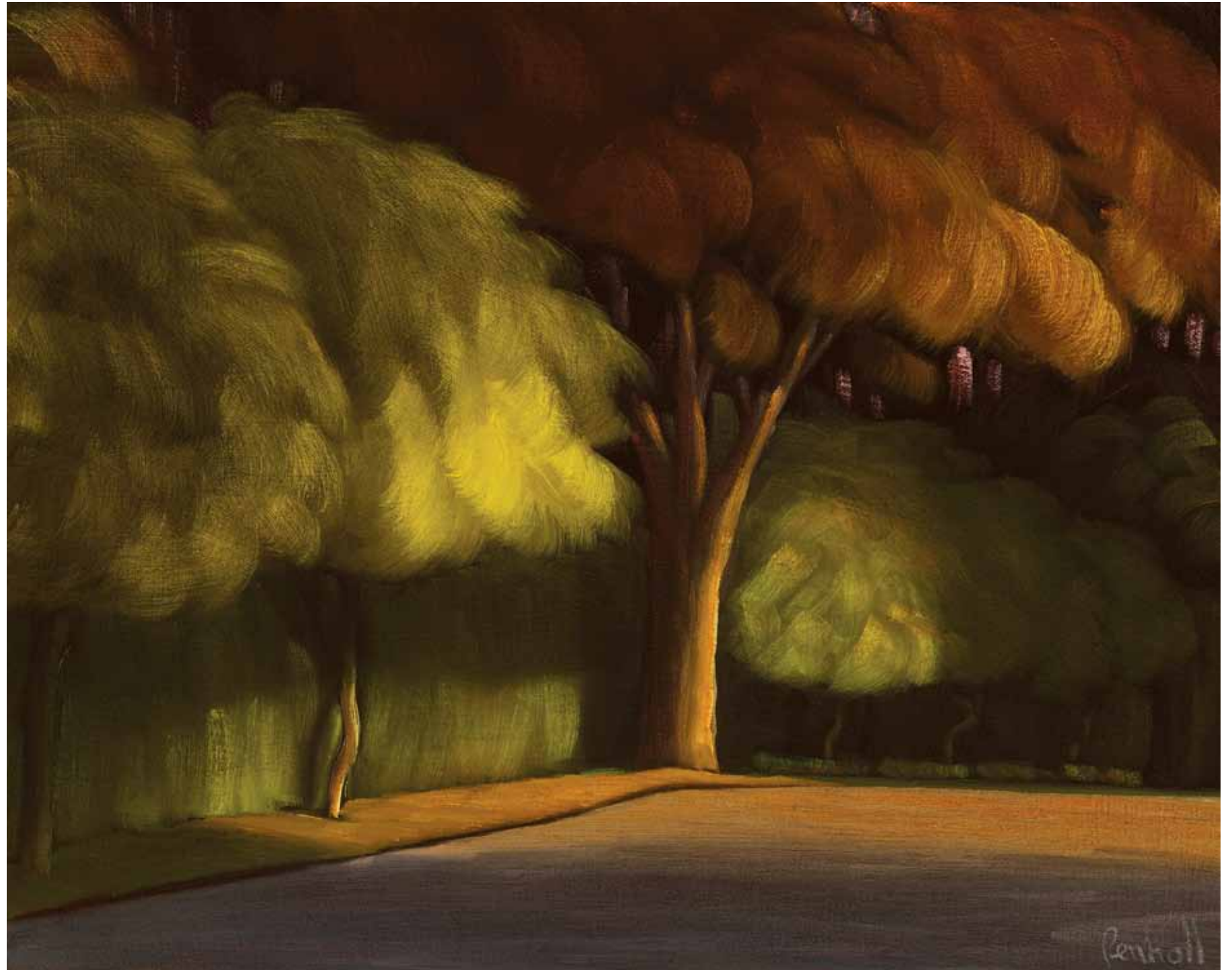
Small Rise
30 X 40" | OIL ON CANVAS



Solid Hedge
12 X 15" | OIL ON CANVAS



Street Study
12 X 15" | OIL ON CANVAS



Three Lamps
12 X 14" | OIL ON CANVAS



Trail Head
12 X 13" | OIL ON CANVAS



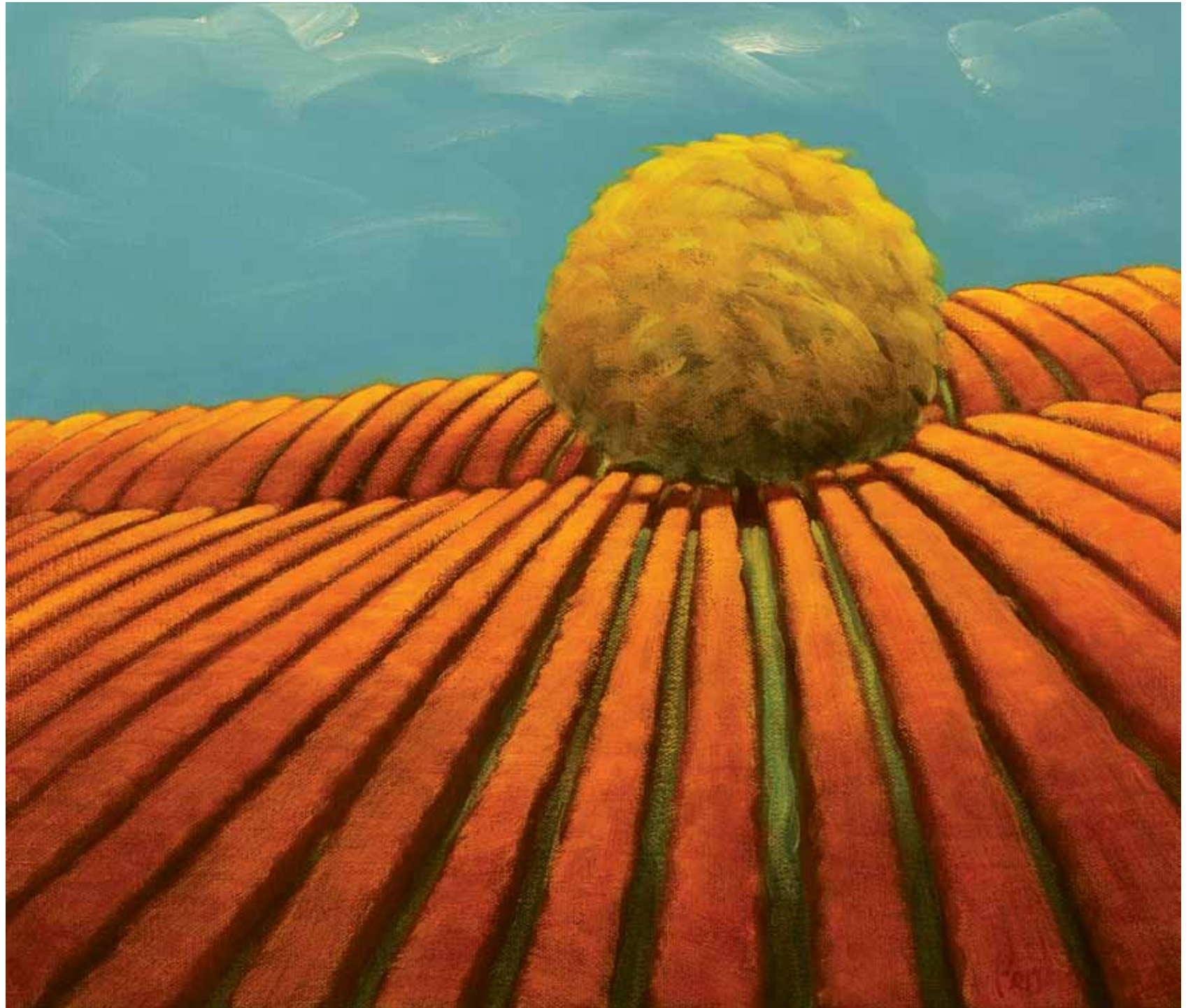
Tree Line

12 X 15" | OIL ON CANVAS



Warm November

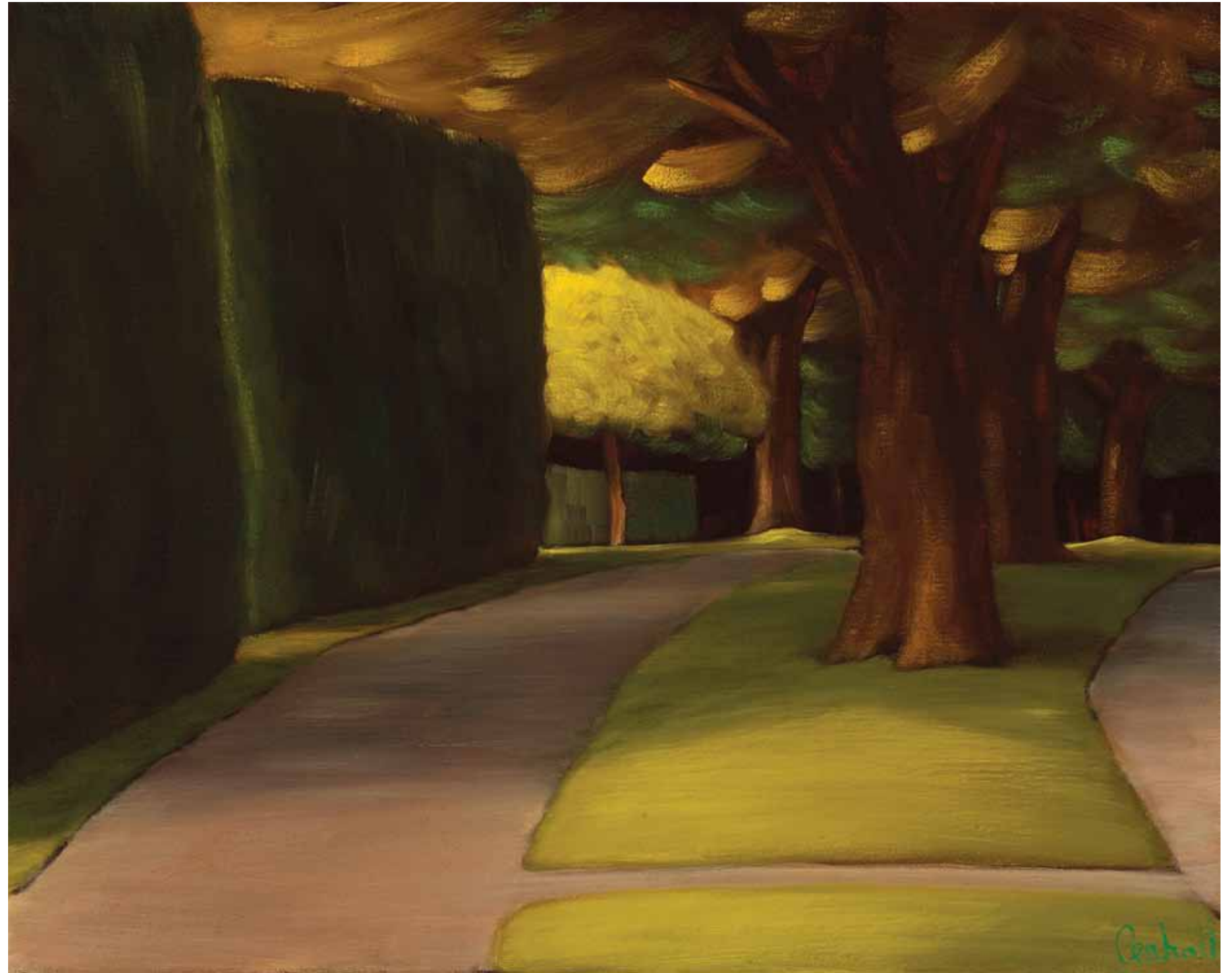
12 X 14" | OIL ON CANVAS



Warm Wall
12 X 15" | OIL ON CANVAS



Westside Walk
12 X 15" | OIL ON CANVAS



Wind Break Study

12 X 15" | OIL ON CANVAS





Yellow Evening
14 X 60" | OIL ON CANVAS

Ross Penhall

Nature as shaped and redefined by human hands is the focus of Ross Penhall's captivating yet enigmatic paintings. His work depicts enchanting, manicured, urban landscapes—groomed lawns, shaped shrubbery, pruned trees—all arranged in eye-pleasing symmetry that speaks of a serene, orderly world.

Drawing upon the influences of such notable painters as Thomas Hart Benton, Georgia O'Keefe, Grant Wood and Emily Carr, Penhall has taken his own turn enhancing the enhancements. He flattens, stylizes and simplifies forms, embellishes colors and exaggerates contrasts. The result is a make-believe, somewhat unreal landscape that although compelling, serves as a gentle reminder that nature is never static, and man's imprint is transitory unless vigilantly maintained.

Penhall often employs a path or tunnel that leads to an opening, a way through the scene into whatever unknown magic lies just beyond the horizon. His impeccable feeling for composition leads the viewer as effortlessly through his paintings as a child through an enchanted forest.

SELECTED EXHIBITIONS

- 2011 Caldwell Snyder Gallery, St. Helena, CA.
- 2010 Campton Gallery, New York, NY.
- 2008 Caldwell Snyder Gallery, San Francisco, CA.
- 2007 Caldwell Snyder Gallery, St. Helena, CA.
- 2006 Campton Gallery, New York, NY.
Trajan Gallery, Carmel, CA.
- 2005 Caldwell Snyder Gallery, San Francisco, CA.
San Francisco International Art Exposition, San Francisco, CA.
- 2004 Orcas in the City fundraiser, Vancouver, BC.
Caldwell Snyder, New York, NY.

- 2003 Art Chicago, Chicago, IL.
Caldwell Snyder 20th Anniversary, San Francisco, CA.
Trajan Gallery, Carmel, CA.
- 2002 Trajan Gallery, Carmel, CA.
- 2001 Buschlen Mowatt Gallery, Vancouver, BC.
- 2000 2 X 2 group exhibition, Buschlen Mowatt Annex, Vancouver, BC.
Graduated Perspectives, Capilano College Alumni Show, North Vancouver, BC.
Toronto 2000 International Art Fair, Toronto, Canada.
Visions of the North Shore Print show, West Vancouver, BC.
Buschlen Mowatt Gallery, Art London, UK.
A series of etchings produced collaboratively with New Leaf Editions, Vancouver, BC.
- 1999 Buschlen Mowatt Gallery, Vancouver, BC.
- 1998 A series of etchings produced collaboratively with New Leaf Editions, Vancouver, BC.
Buschlen Mowatt Gallery, Vancouver, BC.
Buschlen Mowatt Gallery, New York Art Fair, NY.
- 1997 Heartfelt, images concerning love by 13 BC artists, Vancouver, BC.
- 1996 Stone lithographs produced collaboratively with Prior Editions Ltd., Vancouver, BC.
- 1995 Buschlen Mowatt Gallery, emerging artist group exhibition, Vancouver, BC.

SELECTED PUBLICATIONS & MEDIA

- 2006 The Standard, Discovery Channel.
- 2005 FANS Award, North Vancouver.
- 2005 BC Art Teachers Association Keynote Speaker.
- 2004 Ross Penhall, Setting the art scene on fire, Vancouver Lifestyles.

- 2004 Trajan Gallery, Artistic Serendipity, Carmel Magazine, Holiday Issue.
- 2003 Ross Penhall's landscape paintings are all about mood, Monterey County Herald, July 10, 2003.
- 2002 West Vancouver Visual Arts Education Award Fundraisers.
- 2002 Be There Now, Coast Weekly, Monterey County, May issue.
- 2001 Lower Lonsdale attracts new gallery, North Shore News, Vancouver, November 2, 2001.
- 1998 University of Western Ontario IVEY Business Quarterly, Spring Cover.
- 1996 Great Works: An overview of contemporary BC Artists, Art Advisory Ltd.
- 1996 CBC Broadcast I, November.
- 1996 BCTV News Hour, November.

CALDWELLSNYDER

**1328 MAIN STREET
ST. HELENA, CALIFORNIA
CALDWELLSNYDER.COM
707.200.5050**